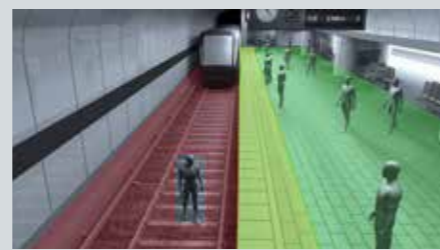
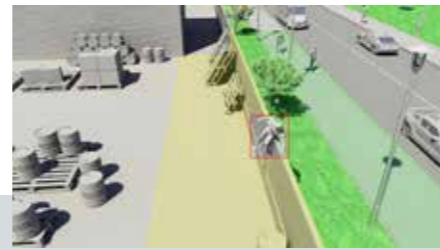
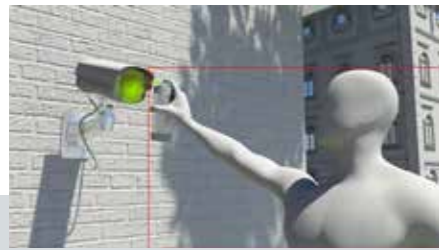
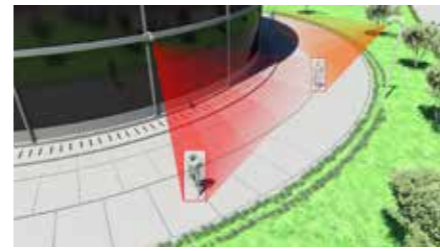
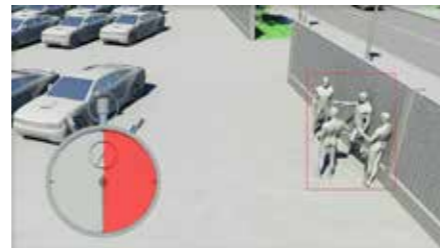
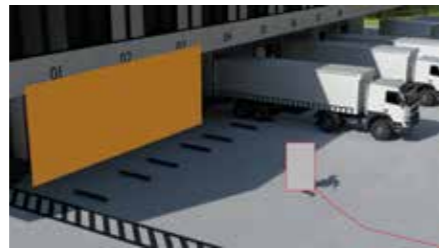


Extra. Safe.



Video Security means Intelligent Video Surveillance Powered by the IPS factor.

IPS VideoManager: Video Management and Video Analytics from a single source.



IPS Outdoor Detection

IPS Privacy Protection

IPS Loitering Detection

IPS Dome Tracker

IPS Sabotage Detection

IPS Indoor Detection

IPS Intrusion Detection

IPS Tamper Detection

IPS Motion Detection

IPS Critical Infrastructure Protection

IPS Public Transport Protection

IPS Left Luggage Detection

20

22

24

26

28

30

CONTENT

IPS VideoManager **04**

Key Features **08**

IPS NextGen Client **10**

Scalability and References **12**

IPS VideoAnalytics: The modules **16-31**

IPS NextGen VideoAnalytics

16

What is IPS Intelligent Video Software?

Securiton's technology brand „IPS Intelligent Video Software“ originated in 1965 as a German manufacturer of high-end video analytics and video management solutions with in-depth know-how in this field. Since then, a dedicated and creative team of developers based in Munich has continuously expanded the product portfolio and developed suitable solutions for video security. The IPS brand has been part of Securiton Germany since 2006. Due to their proven and outstanding reliability, products with the IPS label are used in thousands of installations in Europe. Both small companies and global players from various high-security sectors rely on IPS video analytics. For example, correctional facilities, critical infrastructures, oil refineries and control centres are among the long-standing clientele. In addition, there are close partnerships with system integrators, distributors, providers and technology partners throughout Europe.



IPS VideoManager

IPS VideoManager is an intelligent video management software for latest IP video surveillance systems. The software enables the reliable monitoring, control and management of all surveillance cameras, intuitive operation with a variety of user interfaces, and easy integration of third-party systems. The IPS VideoManager can be equipped with numerous native video analytics, which significantly increase the effectiveness of your video surveillance system. Due to flexible licensing, it is unlimited scalable and ideally suited for small and medium-sized systems as well as networked multi-site systems.

Your benefits with our intelligent Video Management Software

- Unique IPS 3D Technology enables the automatic as well as manual (click in plan) control of PTZ cameras; Display of motion profiles and camera segments
- Deep Integration of IPS video analytics for real-time detection of critical events or forensic analytics
- Open interfaces and support of standard protocols for easy integration of other systems, e.g. access control, license plate recognition etc.
- Flexible licensing and unlimited expansion options for optimal future security



Video Management and Video Analytics from a single source.

Intelligent video surveillance with the IPS factor



IPS VideoManager stands for security

IPS VideoManager forms the central element and significantly supports security personnel in monitoring access to company premises and indoor areas, in detecting theft, vandalism and stock shrinkage, serves to increase security in working environments and helps to optimise operational processes.

Digital images provide an overview

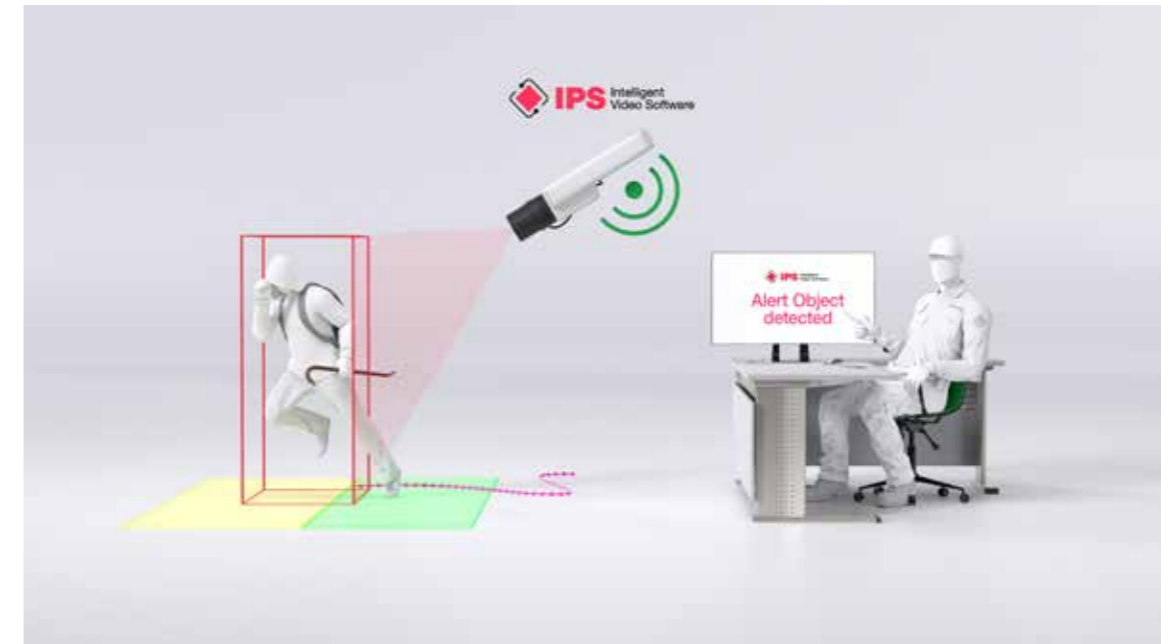
Thanks to the user-friendly interface of IPS VideoManager, users benefit at all times from a clear display of what is happening - and focus their attention on the essentials. Despite complex functions, IPS VideoManager offers a modern operating concept for intuitive use.

Targeted recording methods

Recordings secure important evidence to retrace the course of events and to convict perpetrators. IPS VideoManager records digital video images in high quality. Versatile configuration paths enable, for example, recording from the detection of an activity or from the triggering of an alarm.

What is the IPS factor?

- Unique: video management and video analytics from a single source
- Inventive: 55 years of experience in the development of intelligent video analytics
- Predictive: Highly stable early warning systems with preventive hazard detection
- Reliable: System-based detection with real-time alarms
- Intelligent: User support through fully automatic object tracking
- Convincing: High-quality perimeter security, even with poor visibility
- Innovative: High-end video technology made in Germany



Intelligent control for exact determination of position and motion

IPS VideoManager uses 3D technology to combine geo-coordinates with video images. This makes the space in the video calculable: positions in the video can be determined, people or events can be located.

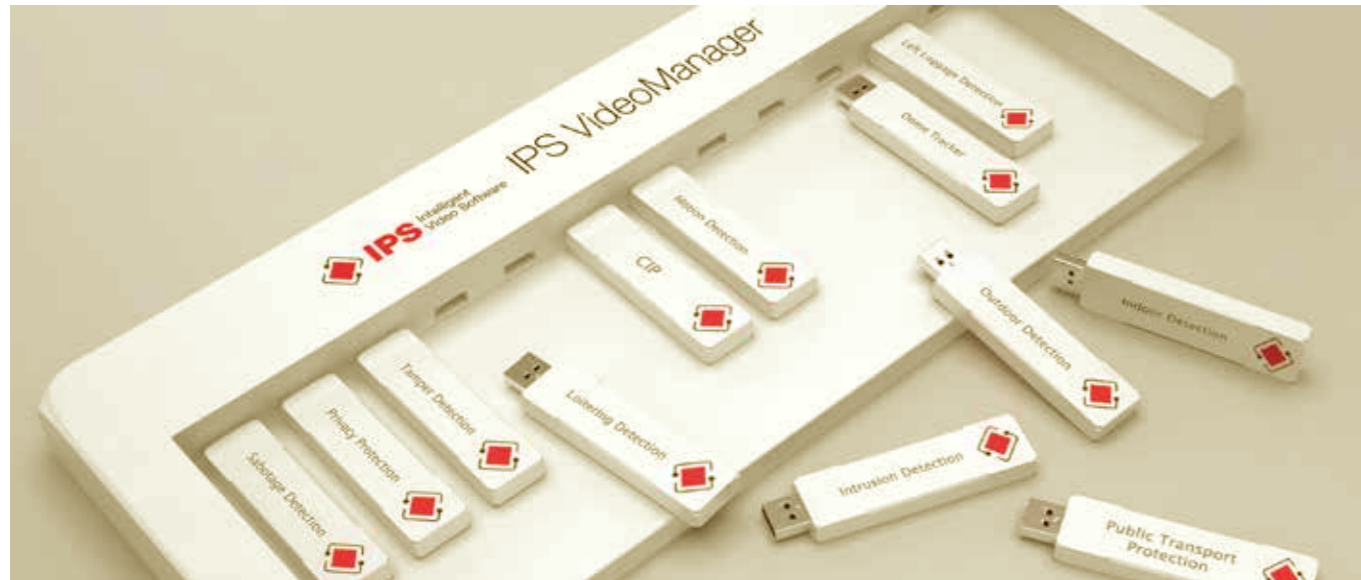
Thanks to the intelligent control in conjunction with video analytics, IPS VideoManager can carry out an exact position determination and, as a result, visualize motion profiles in the site plan. This functionality makes it possible to generate motion profiles even across multiple cameras or across an entire property. This means that detection does not end at the camera's range of view, but rather at the boundary of the area to be protected.

Intelligent video analytics – real-time alerts

The use of video analytics makes the video security system extremely efficient. With video analytics that can be integrated in a modular manner, dangers can be identified in a matter of seconds and appropriate intervention measures can be initiated.

The basic function of the analytics is motion detection: the system recognizes and distinguishes between objects (persons or animals) based on speed and size. As soon as certain limits or times are exceeded, i.e. undesirable events have occurred, the system automatically generates an alarm message.

Video Management and Video Analytics from a Single Source



Key Features

- Automated surveillance with innovative 3D video technology and deeply integrated IPS VideoAnalytics support your security staff in stress situations
- H.264/H.265 precise playback with exact picture positioning and reverse single image enables an exact analysis of the footage. Thus actions that are finished within a split second can be detected
- Synchronous and asynchronous playback, as well as instant playback in every window facilitate the forensic analysis of the footage
- Extremely fast locating of relevant video material within large data sets by means of IPS Smart Search (Intelligent filtering of activity recordings)
- Tremendous reduction of bandwidth and storage needs due to activity controlled recording
- Effortless management of your security task with the support of **12 high-end integrated video analytics**, also available camera-based.

Intuitive Operation

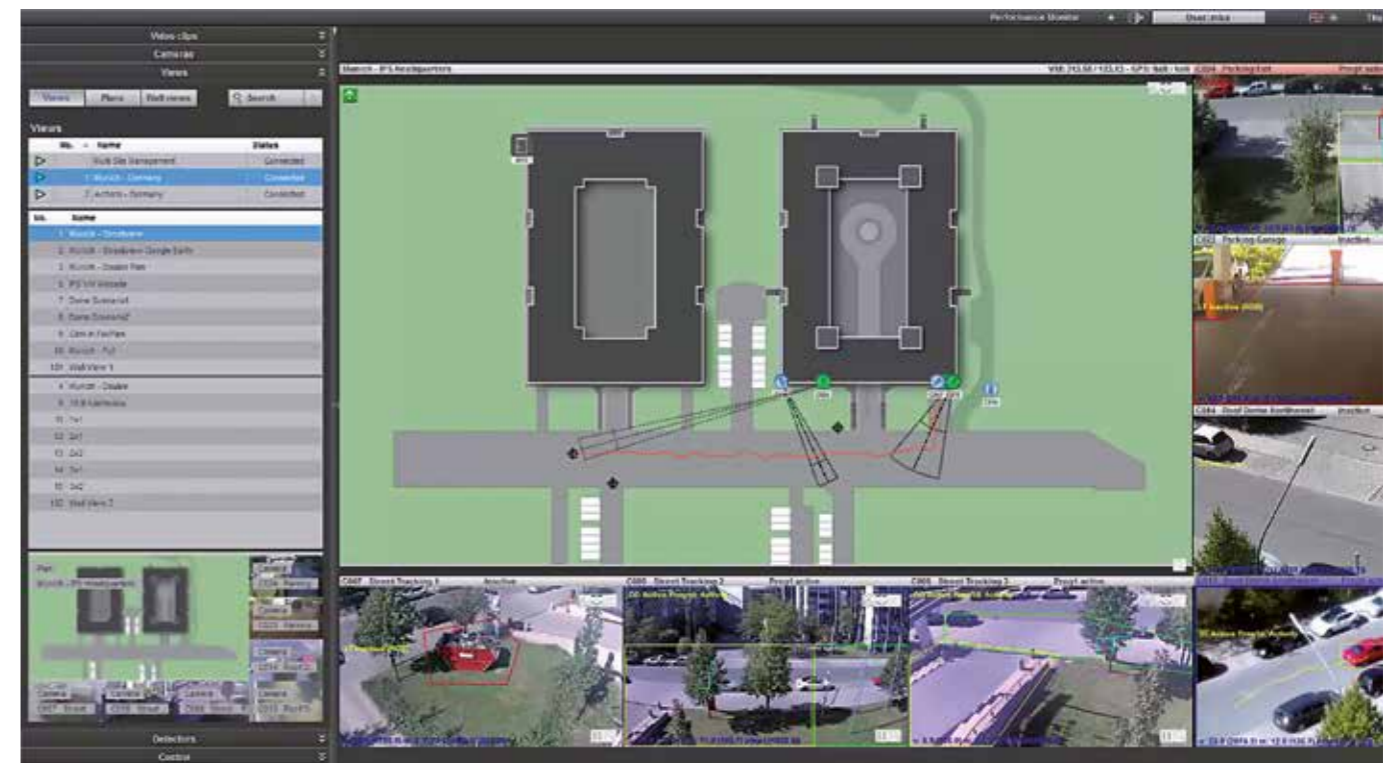
- Quick access to the numerous functions. Thanks to the three sites **live image, alarm image and playback**, the IPS VideoManager is very easy to handle. Operation is uniform for desktop, mobile and web client
- Alarm processing similar to control centres and thus perfectly suitable for large systems with several users (For example, Accept alarm, forward, hold, prioritize, enter alarm reason etc.)
- Even when monitoring complex areas, ease of use is ensured by the IPS 3D Technology and elaborated features, such as control of dome cameras by clicking in the map and display of the camera's viewing angle
- Extension of touch operation for site plans

Integration with third-party systems

- Very easy integration in third-party systems with transcoded H.264/H.265 stream with integrated overlay of the analytics objects and privacy mask
- IPS VideoManager provides extensive ANPR features. In addition to the native integration of Hikvision and Axis cameras with automatic number plate recognition (ANPR), the generic integration of other systems via SOAP and Host TCP interfaces is also supported
- IO devices can also be connected with HTTPS. Universal SOAP TCP and bidirectional host TCP interface for easy integration of third party systems, such as access control or integration of the IPS VideoManager in security management systems with remote control of VideoManager clients
- A variety of camera models from different manufacturers is integrated natively. Independent of manufacturer, all camera models can be integrated via ONVIF with events and multi-streaming concept.
- Display of analytics objects or objects delivered by a third system, i.e. drone detection system as vector or trace with specific avatar
- Support of ONVIF Profile T
- Interface for remote control of devices via HTTP

System Security

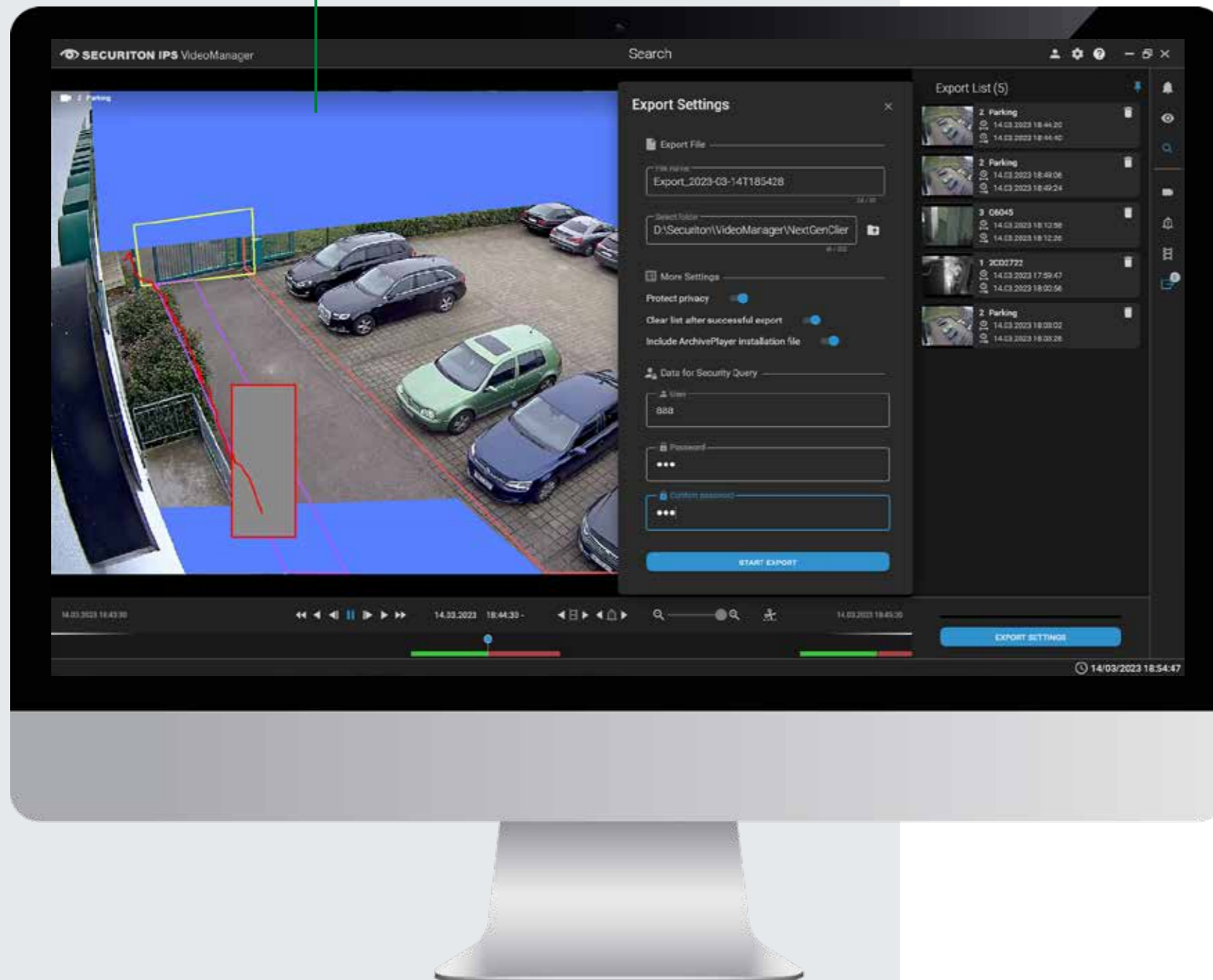
- Latest encryption standard TLS 1.3 in use
- Encrypted communication on the SOAP TCP interface and SOAP Web Gateway interface
- Encrypted communication and streaming between cameras and Device Server
- Support of DNS and IPv6 (Communication to system components, Streaming between cameras and Device Server, Streaming between Device Server and Client)
- IPS VideoManager ensures the highest level of data security with numerous built-in security features, such as encrypted communication and multi-level user rights
- Seamless end-to-end encryption from the image source to the client
- Easy recovery of former versions through encrypted storage of the system configuration with rollback function
- IPS VideoManager meets the highest safety requirements with a special „High Security“ mode (forcing of complex passwords, marking of existing standard passwords after update, automatic configuration and activation of the Windows Firewall, etc.)
- Long-term reliable operation due to mechanisms for failover and redundancy
- The IPS TimeMachine enables a quick and targeted reconstruction of past events, including the operator reactions. This feature is especially suitable for training purposes and evaluation



Access your IPS VideoManager from anywhere:

- IPS MobileClient:** Mobile video surveillance on the move or at home – The IPS MobileClient enables convenient operation of the IPS VideoManager from anywhere.
- IPS WebClient:** Intuitive video surveillance from any device – IPS WebClient lets you control your IPS VideoManager from any device. The web-based application supports all common web browsers and allows you to use the IPS VideoManager on a laptop, tablet or smartphone.

IPS NextGen Client



IPS NextGen Client

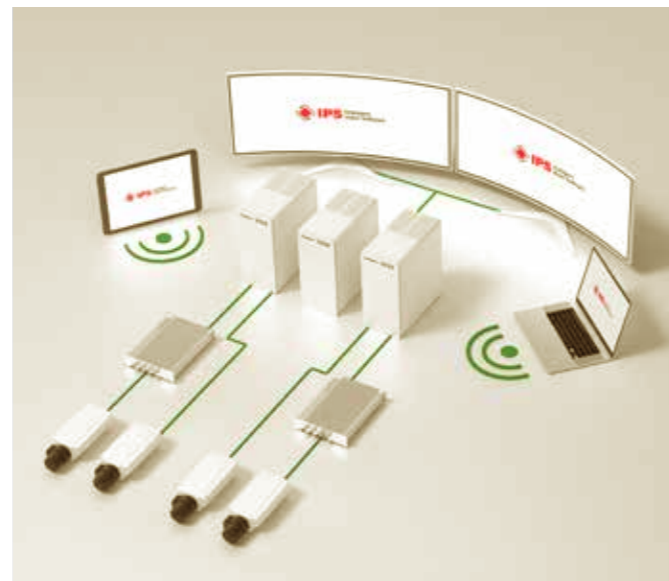
With the IPS VideoManager a new client is available that is even more user-friendly and intuitive to use. The new client is based on the graphic standard Google Material Design, which is widely used on the web. Developed according to the latest findings in technology, design and ergonomics, it impresses with its maximum clarity and intuitive user guidance.

- Resources (cameras, digital inputs, site plans) can be saved as favourites
- Camera groups are automatically displayed on the correct number of windows
- Display of the IPS NextGen Client in window or full screen mode
- Optionally compact (simple) or detailed display of the resource list
- Resource list can be arranged on the right or left
- Light and dark design switchable

Highlight – Search page provides easy-to-use event search:

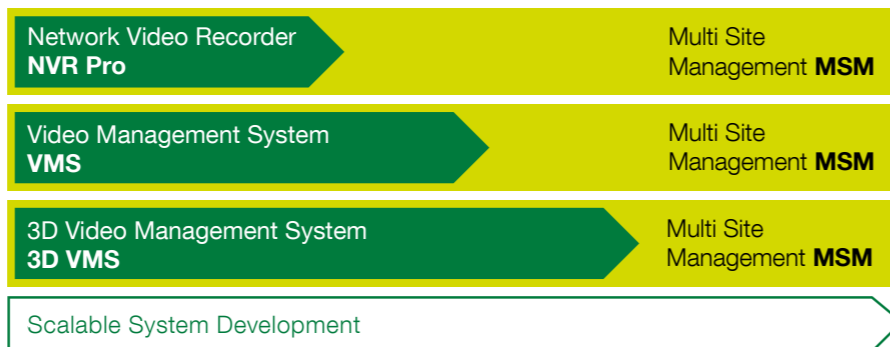
- The operator has three options for searching the recordings:
 - Directly in the camera list
 - Only display the alarms and refine the search by alarm type, object classification, alarm cause and alarm info
 - View all recordings ((duration, alarm, activity, manual)
- The period of the search can be set individually,
- Filter options in the resources and result lists are available according to camera number or camera name
- Sorting options in the result lists are chronological (ascending/descending)
- Easy export of multiple recordings (Archive file with password function)
- Export function processes possible masking for data protection compliance
- Preview pictures (alarm cards) also carry masking for data protection compliance

Maximum flexibility with the IPS VideoManager



Scalable Systems

The IP-based video management platform guarantees infinitely variable, unlimited system scaling. The IPS VideoManager ensures maximum flexibility and thus future security and investment protection.



Functionalities

Network Video Recorder (NVR Pro)
Supports up to 32 cameras and clients and offers comprehensive video management functions (e.g. alarm handling and intelligent video analytics).

Video Management System (VMS)
IP-based platform for comprehensive, multi-server Video security systems. Supports an unlimited number of cameras and clients.

3D-Video Management System (3D VMS)
IP-based platform for geo-referenced, multi-server video security systems. Supports an unlimited number of cameras and clients.

Multi Site Management (MSM)
IP-based platform for the higher-level operation of individual video security systems. Supports the central administration, control and configuration of an unlimited number of properties.

References

Over 50 years of experience in the development of video surveillance solutions and by far more than 2,000 installations prove the highest quality of IPS products.

With decades of development experience, the portfolio today provides comprehensive solutions to challenging applications and meets the highest requirements for critical infrastructures. With their proven and outstanding reliability, the IPS products are deployed in thousands of applications throughout Europe. Ranging from small companies to global players, IPS's customers come from different high security sectors such as prisons, critical infrastructure, petrochemical sites and remote surveillance centres.



Prisons in Europe



Industrial areas of any size



European train stations



Petrochemical plants in Spain



Distribution network operator in Germany



Emergency and service control centers

Product details

Languages	German, English, French, Italian, Spanish, Russian
Cameras	Vendor-independent Operation of several analytics modules per camera possible Suitable for colour and thermal cameras
System integration	In higher-level systems such as control systems, building management systems or PSIM
Interfaces	ONVIF, SOAP, Host TCP

Applications

- Remote surveillance centres
- Train stations
- Data centres
- Prisons
- Industry
- Authorities
- Logistics
- Energy
- Wholesale and Retail
- Public areas and buildings
- Private properties

IPS VideoAnalytics

Intelligent Video Analytics for highest Security

IPS VideoAnalytics are intelligent video analytics modules operated on servers. The software informs in real-time about suspicious objects or events and supports your security staff in recognising potential threats before it is too late. Choose from a wide variety of intelligent video analytics features to find the right analytics product for your specific application. IPS VideoAnalytics increase the effectiveness of your video surveillance system by reducing the amount of data, supporting your security staff and making relevant video material accessible within seconds.

Product details

Languages	German, English, French, Italian, Spanish, Russian
Cameras	Vendor-independent Operation of several analytics modules per camera possible Suitable for colour and thermal cameras*
Platform	IPS VideoManager
System integration	Video management systems of various manufacturers (via IPS Analytics Streamin Service)

Applications

- Remote surveillance centres
- Train stations
- Data centres
- Prisons
- Industry
- Authorities
- Logistics
- Energy
- Wholesale and Retail
- Public areas and buildings
- Private properties

* depending on analytics module



Your Benefits

- Made in Germany - development in Germany for more than 50 years
- Open Platform – From simple alerting to deep integration into the IPS VideoManager or any other VMS (via IPS Analytics Manager)
- Highly reliable detection and low false alarm rates due to machine learning technologies
- Intuitive user interface for easy configuration and operation

IPS VideoAnalytics overview

Securiton's Technology Brand IPS currently offers 12 video analytics for a variety of applications.



IPS Outdoor Detection

For perimeter protection in high security applications

Server-based



IPS Privacy Protection

For privacy protection in monitored areas

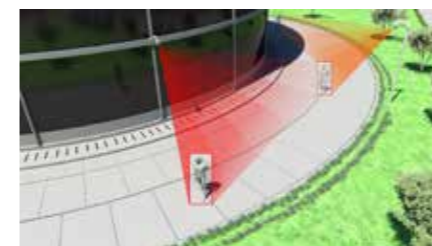
Server-based



IPS Loitering Detection

For the detection of loitering

Server-based*



IPS Dome Tracker

For automatic object tracking

Server-based (IPS VideoManager exclusively)



IPS Sabotage Detection

For camera sabotage protection

Server-based*



IPS Indoor Detection

For indoor protection

Server-based*



IPS Intrusion Detection

For perimeter protection of outdoor areas

Server-based



IPS Tamper Detection

For camera manipulation protection

Server-based



IPS Motion Detection

For activity detection

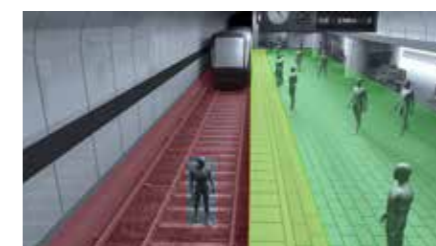
Server-based



IPS Critical Infrastruct. Protection

For the protection of critical infrastructures

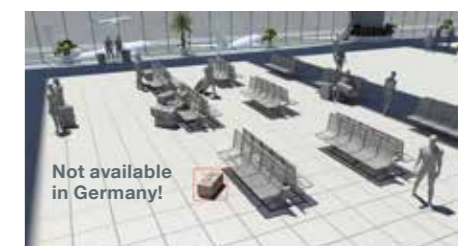
Server-based (IPS VideoManager exclusively)



IPS Public Transport Protection

For the monitoring of track beds and platforms

Server-based

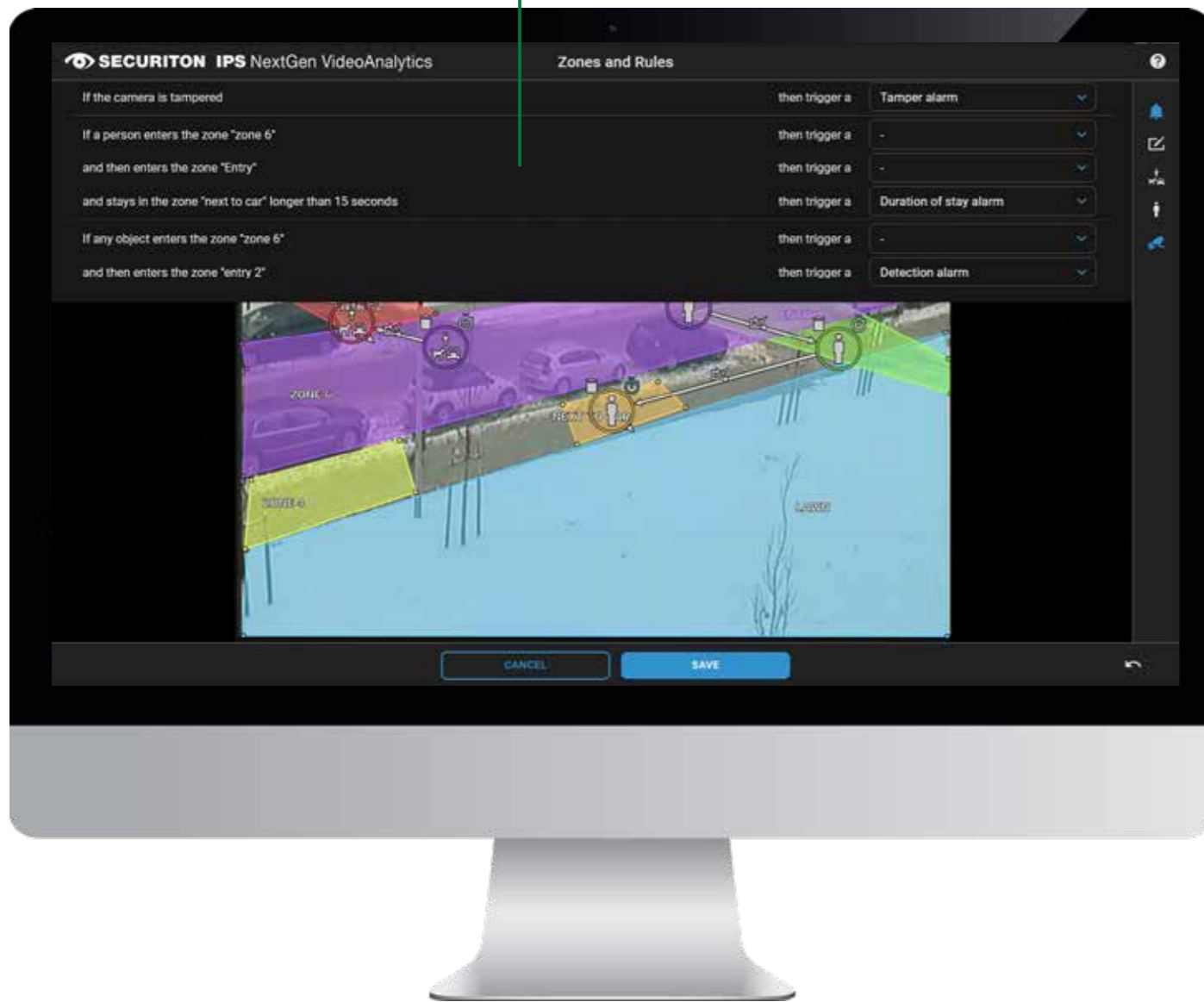


IPS Left Luggage Detection

For the detection of suspicious luggage

Server-based (IPS VideoManager exclusively)

IPS NextGen VideoAnalytics



Your benefits

- Intuitive graphical configuration
- Several rules possible in one configuration
- Several rules can be linked
- Seamless integration in IPS VideoManager
- Reduced bandwidth and storage requirements
- Fast recording search
- Optimal cost / benefit ratio through integration of several analyzes and scenarios in one module

Applications

Server-based video analytics for indoor and outdoor applications
 Perimeter, site and open area monitoring
 Suitable for thermal cameras
 Automatic recording control

IPS NextGen VideoAnalytics

As a pioneer in video analytics, IPS is taking the next step towards the future of intelligent video analytics. The IPS NextGen VideoAnalytics combine several intelligent video analytics in one module, where previously several individual modules were necessary. The redesigned, clear interface was developed according to the latest findings in technology, design and ergonomics and is based on the Google Material Design graphic standard.

The new operating concept ensures increased user friendliness. By generating individual graphical rules, many application scenarios can be covered, which means that the user is very free to choose the application. Several applications are even possible for one camera channel. All analytics modules alert you in real time as soon as a dangerous situation occurs.

Key features

- Automatic generation of alarm rules through flexible graphical configuration of zones and objects
- Several independent rules are possible in one configuration
- Several rules can be linked
- Alerts in the event of intrusion or zone crossing
- Real-time alerting based on the defined rules
- Forensic search using the stored metadata
- Trained AI Technologies support the detection of disturbing objects and persons
- Motion and activity detection
- Detection of manipulations on the camera (blinding, covering, redirecting)
- Masking of objects and zones to protect privacy
- Detection of people loitering
- Consideration of object sizes and perspectives
- Available in two versions that build on one another: Standard, Professional

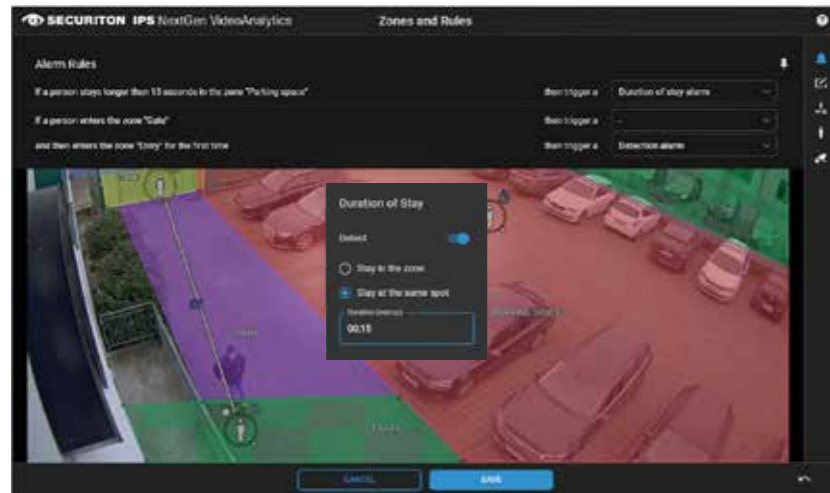
IPS NexGen VideoAnalytics Licences

Functions	Standard	Professional
Basic functionality		
Number of zones	unlimited	unlimited
Number of rules (incl. tampering detection)	2	5
Number of links within one rule	0	2
Motion detection	✓	✓
Alarm in the event of tampering (Blinding, covering, redirecting)	✓	✓
Alarm in the event of zone intrusion	✓	✓
Alarm in the event of moving from zone to zone		✓
Masking of zones (irreversible)	✓	✓
Masking of objects and zones (reversible/irreversible)		✓
Alarm as per object		
General objects	✓	✓
Persons (fully visible, upright)		✓
Alarm as per behaviour		
Loitering alarm when staying in one zone		✓
Loitering alarm when staying at the same spot		
Camera/Sensor Support		
Analytics for RGB cameras	✓	✓
Upgrade Licences (available for cameras with IPS NextGen VideoAnalytics as package)		
Upgrade Standard > Professional	✓	

IPS NextGen VideoAnalytics

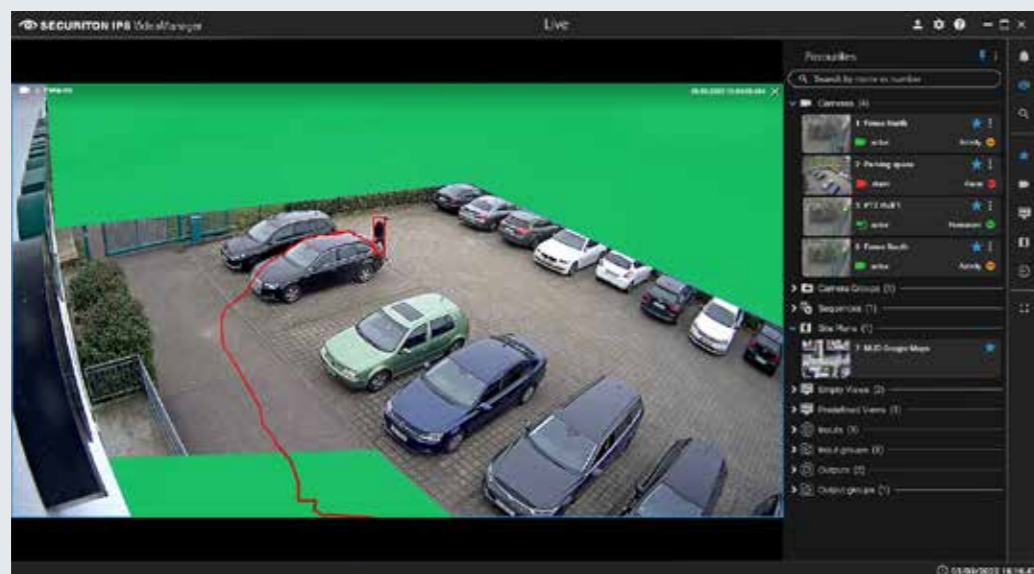
Loitering Detection

Integrated into IPS NextGen VideoAnalytics, this function ensures that loitering persons are detected in time and an alarm is triggered.



The Loitering Detection function offers the following:

- The time a person is allowed to stay in a predefined zone until an alarm is triggered can be set variably by means of a pop-up window.
- Duration of stay freely selectable (for stay in zone or stay in one place)
- Alarm rules can be set individually – for example, a detection alarm can be set as a rule in the event of unauthorised entry, or a duration of stay alarm can be set in the event of the detection of loitering persons



Privacy Protection

IPS NextGen VideoAnalytics integrates this function to ensure that privacy is protected and data protection regulations are complied with. The set-up is done via the properties window, either you select object related or zone related



The Privacy Protection function offers the following:

- The Standard licence has a static masking of zones that is irreversible, i.e. cannot be reversed.
- The Professional licence includes the static masking of zones and the masking of objects. These are both reversible and irreversible.
- The user can mask complete zones over a large area or cover persons and objects with a coloured field



IPS Outdoor Detection



Intelligent video analytics for highest security

The CPNI-certified IPS Outdoor Detection video analytics alerts you in real time when people or vehicles enter a secured outside area. With its already in 1995 patented 3-zone concept, it allows an exact friend or foe recognition. Additionally, it can be perfectly adjusted to its environment thanks to special filters (i.e. flight of birds, shadows, clouds). This facilitates a reliable detection of unauthorised accesses even under difficult lighting and weather conditions. Installation and configuration is straightforward and it is suitable for outdoor applications.

Key features

- Real time alerting in case of intrusion in a secured area
- Activity recognition, recognition of camera sabotage, objects are recognised and will be tracked
- Video analytics based on machine learning technology guarantees a low false alarm rate
- Configuration of capture, alarm and priority zone with the IPS 3-zone concept
- Setting of object sizes, object directions, object distances, object speed, perspectives and application variants
- 3D georeferencing and simultaneous object confirmation possible (IPS VideoManager)
- Suitable for colour and thermal cameras



Your Benefits

- Reliable perimeter protection in all weathers, suitable for high security applications
- Recording search of relevant video footage within seconds
- Activity-controlled recording and searching reduces bandwidth and storage requirements
- Cost advantage due to early detection of suspicious behaviour and subsequently avoiding disturbances

IPS Privacy Protection



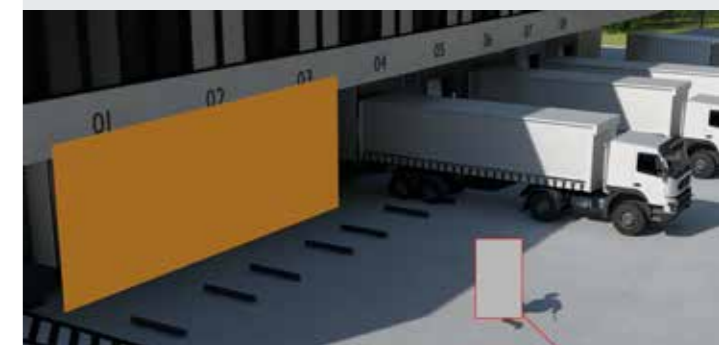
IPS Privacy Protection is an intelligent video analytics module for real-time privacy protection in monitored areas. By using the masking function, fix areas and mobile objects become unrecognisable. This ensures the compliance with legal frameworks regarding the monitoring of public areas. Installation and configuration is straightforward and it is suitable for indoor and outdoor applications.

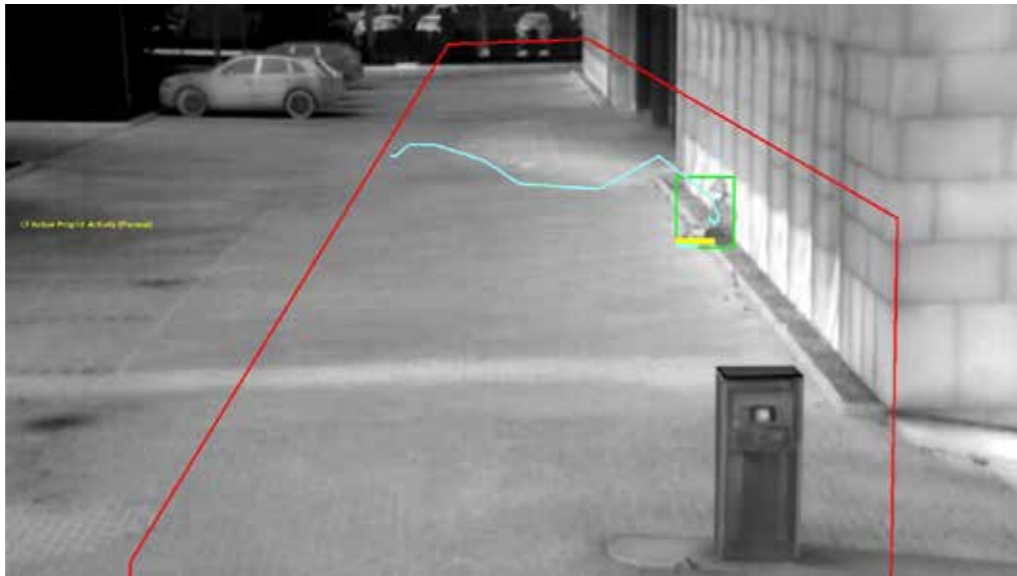
Key features

- Real-time protection of privacy in a monitored area
- Masking of buildings, areas, vehicles or persons (fix areas, mobile objects and activity recognition)
- Video image analysis based on machine learning technology
- Configuration of area and object masking zone
- Setting of object sizes, perspectives and application variants
- Fulfills the highest data protection requirements through irreversible masking (IPS VideoManager)
- Suitable for colour and thermal cameras

Your benefits

- Reliable privacy protection
- Intuitive installation and configuration
- Facilitates video surveillance of public areas in compliance with legal frameworks
- Easy integration into third-party systems (e.g. Milestone)





IPS Loitering Detection

The intelligent video analytics module IPS Loitering Detection alerts you in real time when people dwell in a predefined area for an unusually long time. In case of suspicion, you can intervene quickly and prevent unwanted events such as vandalism. With its zone concept, it allows an exact recognition of suspicious movements. In addition, it can be perfectly adjusted to its environment. This analytics module is suitable for indoor and outdoor applications and provides reliable detection of unauthorised loitering even under difficult weather conditions.

Key features

- Real time alerting in case of people loitering in monitored area
- Recognition of loitering and slow movements as well as activity recognition
- Video analytics based on machine learning technology guarantees low false alarm rate
- Configuration of capture, alarm and priority zone
- Setting of object sizes, object directions, object distances, object dwelling time (up to 30 minutes), perspectives and application variants
- 3D georeferencing and simultaneous object confirmation possible (IPS VideoManager)
- Object classification and filtering (IPS VideoManager)
- Suitable for colour and thermal cameras



Your benefits

- Reliable loitering detection and low false alarm rate under difficult weather conditions
- Activity-controlled recording and searching reduces bandwidth and storage requirements
- Intuitive installation and configuration
- Cost advantage due to early detection of suspicious behaviour and subsequently avoiding disturbances

IPS Dome Tracker



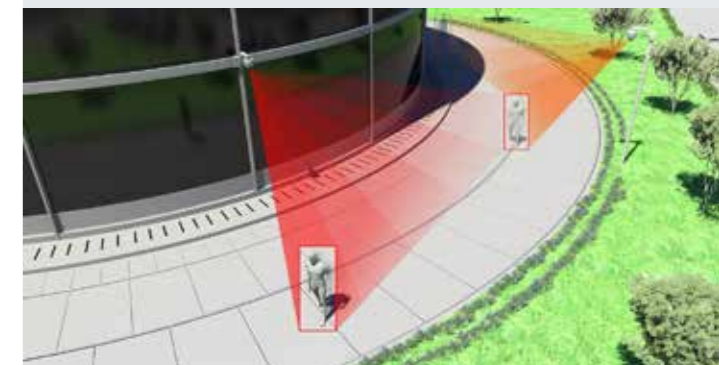
IPS Dome Tracker is an intelligent video analytics module for real-time control of PTZ cameras. It automatically detects and tracks moving objects within the surveillance area. Using 3D georeferencing data, it supports the intuitive PTZ control with mouse click in camera images (fix/PTZ) or site plans and allows the automatic tracking of alarm objects between various surveillance cameras (fix/PTZ). This facilitates the simplified operation of PTZ cameras even within complex surveillance areas. Installation and configuration is straightforward and it is suitable for indoor and outdoor applications.

Key features

- Real-time control of PTZ cameras
- Automatic object recognition and tracking with PTZ cameras
- Trained machine learning technologies to suppress disturbance
- Control of PTZ cameras over mouse click in the image of PTZ cameras
- Control of PTZ cameras over mouse click in the image of fix cameras (with 3D VMS)
- Control of PTZ cameras over mouse click in the site plan (with 3D VMS)
- Alarm object tracking from fix camera to PTZ camera (with 3D VMS)
- Alarm object tracking from PTZ camera to PTZ camera (with 3D VMS)
- Object tracking underneath the camera
- Suitable for selected PTZ cameras

Your benefits

- Simplifies control of PTZ cameras
- Supports the security staff
- Complete automatic object tracking even in complex surveillance areas
- Intuitive installation and configuration





IPS Sabotage Detection

Intelligent video analytics for highest security

IPS Sabotage Detection is an intelligent video analytics module for real-time alerting in case of camera tampering attempts (covering, redirecting, spraying, blinding). It recognises forms and positions of contours and allows the exact identification of deviations. This facilitates the immediate detection of tampering attempts, which substantially improves the reliability of video surveillance systems. Installation and configuration is straightforward and it is suitable for indoor and outdoor applications.

Key features

- Real-time alerting in case of camera tampering attempt
- Sabotage recognition of covering, redirecting, spraying and blinding of cameras
- Video analytics based on machine learning technologies guarantees low false alarm rate
- Configuration of alarm zone
- Adjustment of application variants
- Suitable for colour and thermal cameras



Your benefits

- Enhanced reliability of your video surveillance system
- Intuitive installation and configuration
- Recording search of relevant video footage within seconds
- Immediate and reliable detection of tampering attempts

Included in a camera input channel!

IPS Indoor Detection



The intelligent video analytics module IPS Indoor Detection alerts you in real time when people (or vehicles) enter a secured area. It recognises the object size, determines the object movement and differentiates the perspectives. This facilitates the reliable detection of unauthorised accesses even under difficult lighting conditions. Installation and configuration of this analytics module is easy. It is especially suitable for indoor applications.

Key features

- Real time alerting in case of intrusion in a secured area
- Activity and objects are recognised and will be tracked
- Video analytics based on machine learning technology guarantees a low false alarm rate
- Configuration of capture and alarm zone
- Setting of object sizes, object directions, perspectives and application variant
- 3D georeferencing and simultaneous object confirmation possible (IPS VideoManager)
- Suitable for colour and thermal cameras

Your benefits

- Reliable indoor protection, also suitable for high-security applications
- Activity-controlled recording and searching reduces bandwidth and storage requirements
- Reliable detection in difficult lighting conditions
- Cost advantage due to early detection of suspicious behaviour and subsequently avoiding disturbances





IPS Intrusion Detection

The intelligent video analytics module IPS Intrusion Detection alerts you in real time when people or vehicles enter a secured outside area. With its zone concept, it allows an exact friend or foe recognition. In addition, it can be perfectly adjusted to its environment thanks to special filters. This facilitates a reliable detection of unauthorised access even under difficult weather conditions. Installation and configuration of this analytics module is easy. It is suitable for outdoor applications.

Key features

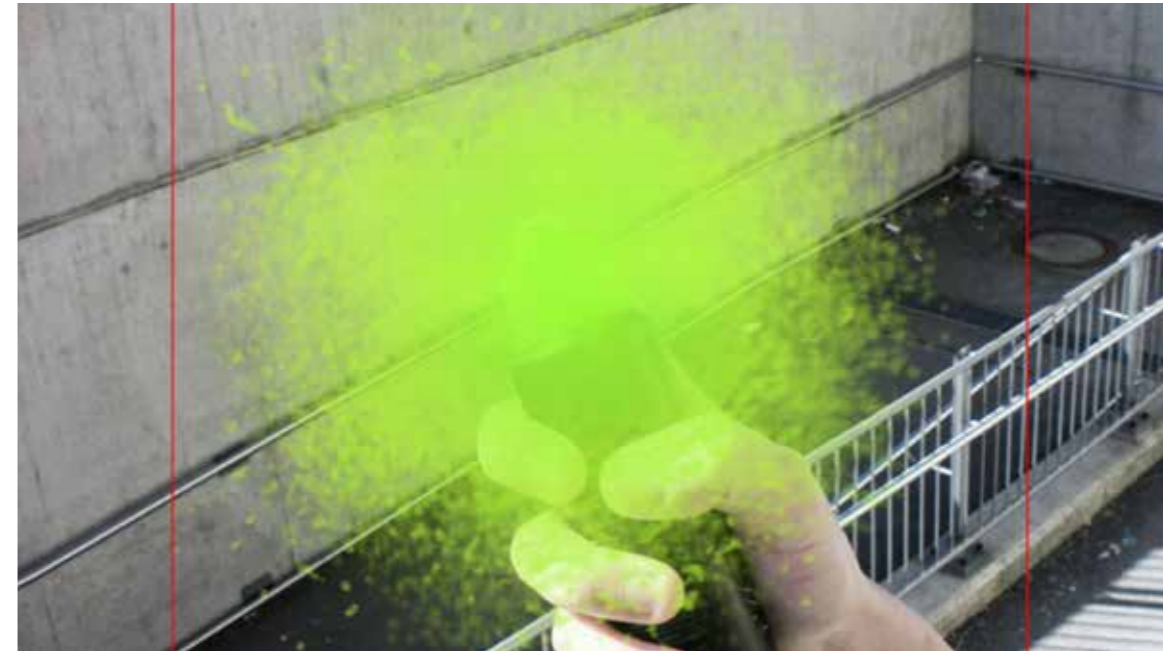
- Real time alerting in case of intrusion in a secured area
- Activity recognition, recognition of camera sabotage, objects are recognised and will be tracked
- Video analytics based on machine learning technology guarantees a low false alarm rate
- Configuration of capture and alarm zone
- Setting of object sizes, object directions, perspectives and application variant
- 3D georeferencing possible (IPS VideoManager)
- Suitable for colour and thermal cameras



Your benefits

- Reliable perimeter protection, suitable for high security applications
- Activity-controlled recording and searching reduces bandwidth and storage requirements
- Recording search of relevant video footage within seconds
- Cost advantage due to early detection of suspicious behaviour and subsequently avoiding disturbances

IPS Tamper Detection



IPS Tamper Detection is an intelligent video analytics module for real-time alerting in case of camera tampering attempts in critical infrastructures (defocusing, misting, concealing, covering, redirecting, spraying, blinding). With permanent scene analysis, it constantly verifies the state of the camera and allows the immediate identification of smallest deviations. This facilitates the fast and precise detection of finest disturbances and tampering attempts, which substantially improves the detection safety in the monitored area. Installation and configuration is straightforward and it is suitable for indoor and outdoor applications.

Key features

- Real-time alerting in case of camera tampering attempts
- Tamper recognition of defocusing, misting, concealing, covering, redirecting, spraying and blinding of cameras
- Video analytics based on machine learning technology guarantees a low false alarm rate
- Configuration of alarm zone
- Adjustment of application variants
- Suitable for colour and thermal cameras

Your benefits

- Protection of the operational availability of video surveillance systems in critical infrastructures
- Enables immediate intervention in the event of camera manipulation
- Immediate and reliable detection of manipulation attempts
- Intuitive installation and configuration





IPS Motion Detection

The intelligent video analytics module IPS Motion Detection alerts you in real time when motion is detected within predefined areas. It recognizes the object size, determines the object movement and differentiates the perspectives. Also, it enables event-driven recording that significantly reduces the bandwidth and storage requirements of video surveillance systems. Installation and configuration of this analytics module is easy. It is suitable for indoor and outdoor applications.

Key features

- Real time alerting when objects move around in predefined area
- Motion and activity recognition
- Video analytics based on machine learning technology guarantees low false alarm rate
- Configuration of capture and alarm zone
- Setting of object sizes and perspectives
- Setting of object directions, object distances and application variants (IPS VideoManager)
- 3D georeferencing possible (IPS VideoManager)
- Suitable for colour and thermal cameras



Your benefits

- Higher effectiveness of your video surveillance system
- Activity-controlled recording and searching reduces bandwidth and storage requirements
- Recording search of relevant video footage within seconds
- Cost advantage due to early detection of suspicious behaviour and subsequently avoiding disturbances

Included in a camera input channel!

IPS Critical Infrastructure Protection



IPS Critical Infrastructure Protection is an intelligent video analytics module for the real-time alerting in case of intrusion into secured outdoor areas of especially sensitive installations. With its 3-zone concept already patented in 1995, it recognises suspicious behaviour and allows an exact friend or foe recognition. Additionally, it detects camera tampering attempts and can be perfectly adjusted to its environment thanks to special filters (i.e. flight of birds, shadows, clouds). This facilitates a precise and reliable detection of attacks against critical infrastructures even under difficult weather conditions. Installation and configuration is straightforward and it is suitable for outdoor applications.

Key features

- Real-time alerting in case of attacks against critical infrastructures
- Tamper recognition of defocusing, misting, concealing, covering, redirecting, spraying and blinding of cameras
- Recognition of loitering and slow movements
- Activity recognition, objects are recognised and will be tracked
- Video analytics based on machine learning technology guarantees a low false alarm rate
- Configuration of capture, alarm and priority zone with the IPS 3-zone concept
- Setting of object sizes, object directions, object distances, object speed, object dwelling time, perspectives and application variants
- 3D georeferencing and simultaneous object confirmation possible
- Suitable for colour and thermal cameras

Your benefits

- Reliable perimeter protection of critical infrastructures even under difficult weather conditions
- Cost advantage due to early detection of suspicious behaviour and subsequently avoiding disturbances
- Combines the functionalities of the analytics IPS Tamper Detection, IPS Loitering Detection and IPS Outdoor Detection
- Recording search of relevant video footage within seconds



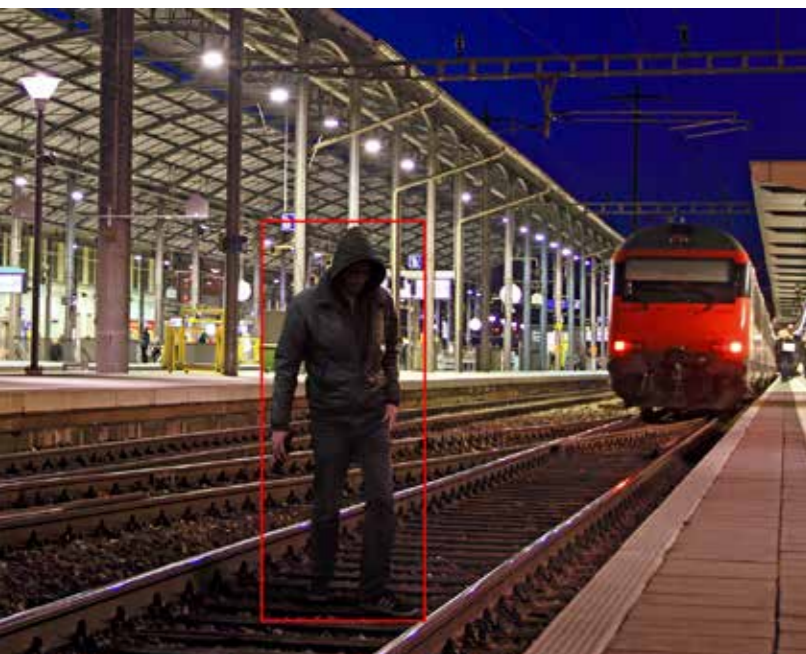
IPS Public Transport Protection



IPS Public Transport Protection is an intelligent video analytics module for real-time alerting in case of potential emergencies in underground or overground railway installations. It recognises people and trains, determines the presence and behaviour of people on the platform and identifies exposed people in the track bed. This enables the reliable detection of dangerous situations even under difficult lighting and weather conditions. Installation and configuration is straightforward and it is suitable for indoor and outdoor applications.

Key features

- Real-time alerting in case of people on the track bed
- Train recognition, object recognition and tracking as well as activity recognition
- Video analytics based on machine learning technology guarantees a low false alarm rate
- Configuration of capture, safety strip and track bed zone
- Setting of object sizes, perspectives and application variants
- Flexibly adjustable alarm criteria, trigger time and alarm intervals
- Suitable for colour cameras



Your benefits

- Software based platform and track bed surveillance
- Facilitates suicide prevention and immediate intervention in case of potential emergencies
- Reliable detection even in highly frequented areas
- Cost advantage due to early detection of suspicious behaviour and subsequently avoiding disturbances

IPS Left Luggage Detection*



IPS Left Luggage Detection is an intelligent video analytics module for real-time alerting in case of suspicious luggage in monitored indoor areas. It recognises abandoned cases or bags and verifies its dwell time. Additionally, it can be perfectly adjusted to its environment. This facilitates an exact detection of abandoned or potentially dangerous luggage even in highly frequented areas. Installation and configuration is straightforward and it is suitable for indoor applications.

Key features

- Real-time alerting in case of suspicious luggage in monitored area
- Luggage recognition and activity recognition
- Video analytics based on machine learning technology guarantees a low false alarm rate
- Configuration of capture and alarm zone
- Setting of object sizes, object directions, object resting time, perspectives and application variants
- 3D georeferencing possible
- Suitable for colour cameras

* Not available in Germany!

Your benefits

- Protection against terrorist attacks and detection of lost luggage
- Facilitates immediate intervention in the event of potentially dangerous pieces of luggage
- Reliable detection even in highly frequented areas
- Intuitive installation and configuration



EXTRA. SAFE.



Securiton Germany

Alarm and Security Systems
Headquarters: Von-Drais-Str. 33 | 77855 Achern | DE
www.securiton.de | info@securiton.de



For Distribution Partners and System Integrators:
Business Unit IPS | Kronstadter Str. 4 | 81677 München | DE
www.ips.securiton.de | ips@securiton.de

A Company of the Swiss Securitas Group
